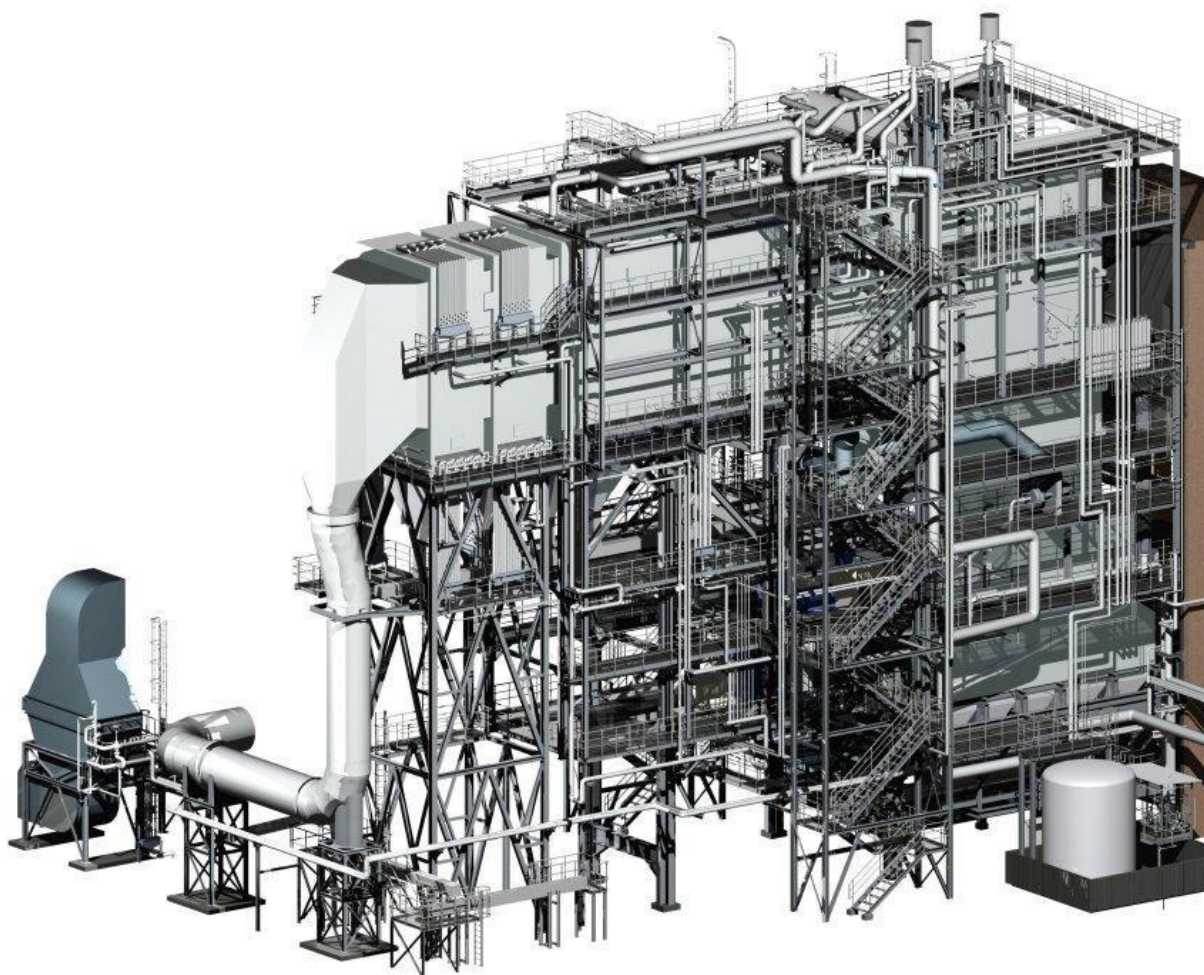


GEMI GIGA

COMPANIES SYNERGY



GEMI GIGA

COMPANIES SYNERGY

GEMI s.r.l.



Accounting Office:
Via Alberto Mario, 65 • 20149 Milan - Italy

P.IVA/C. Fisc. 11584580150

Headquarters:
Via Marcantonio dal Re, 27
20156 Milan - Italy

Phone: +39 02 3088 080
Fax: +39 02 2336 9358
e-mail: gemisrl@gemi-srl.191.it

GIGA s.r.l.

Accounting office:
Via Alberto Mario, 65 • 20149 Milan - Italy

P.IVA/C. Fisc. 08234750969

Headquarters:
Via Marcantonio dal Re, 27
20156 Milan - Italy

Phone: +39 02 3088 027
Fax: +39 02 2336 9358
e-mail: gigaeng.milano@gmail.com

About Us

Since 1995, we operate in Industrial Plants area and we are specialized in unit dedicated to Power Production, Oil & Gas, Chemical and Petrochemical, Offshore with some important experiences in Pharmaceutical Units as well. All these experiences are finalized to Basic, Feed and Detailed engineering.

Thanks to the consolidated cooperation experiences in the last 20 years, all Client requirements are satisfied swiftly with competence and expertise.

GEMI s.r.l. has been qualified, as engineering services supplier, by following companies:

- TECHINT s.p.a.
- ENEL Servizi s.r.l. – Innovation and Engineering Division
- NOOTER ERIKSEN s.r.l.
- PENSOTTI F.C.L. s.p.a.
- SAIPEM s.p.a.

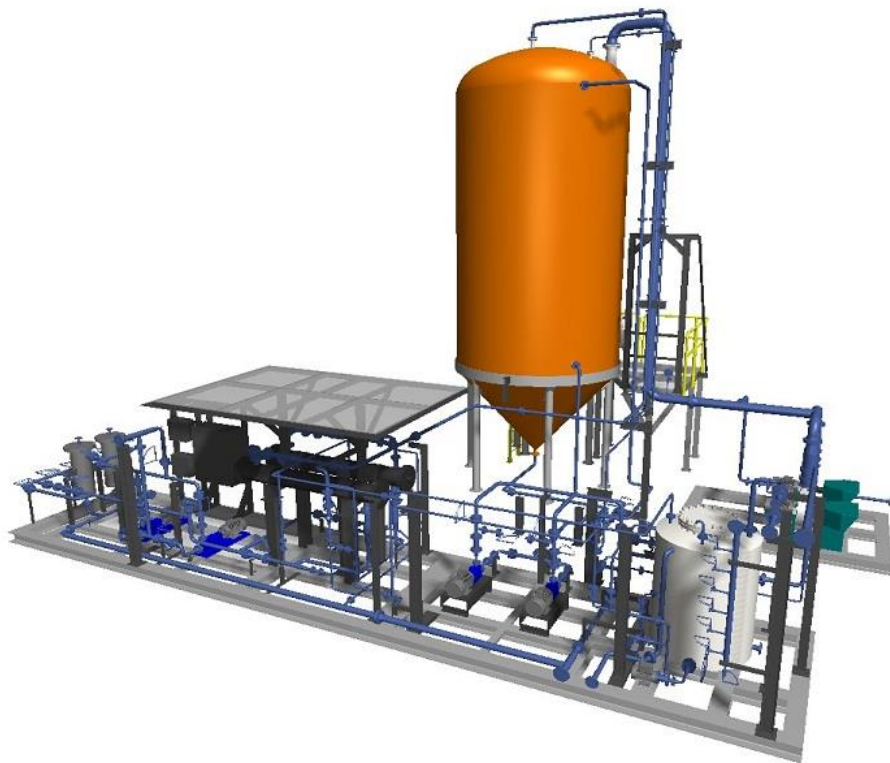
GIGA s.r.l. has been qualified, as engineering services supplier, by following companies:

- ISG s.p.a.
- SIIRTEC NIGI s.p.a.
- PROGER s.p.a.
- CDB ENGINEERING s.p.a.



Following our technical activities developed:

- Feasibility studies.
- Conceptual design development.
- Basic engineering study in 3D model.
- Detail engineering development, including of construction drawings issues (general arrangements, assemblies, isometrics etc.), Material Requisition issue based on project specifications, piping Data Sheet issue (including manual valves, actuated valves, On/Off valves, strainers, spectacle blind etc.).
- Study, FEM analysis and 3D model of main steel structures.
- Construction drawings of main and secondary steel structures complete of grating drilling for pipes and supports.
- Stress analysis calculation and verification.
- Design, verification and construction drawings of piping supports.
- 3D modelling of piping supports in 3D Model software, compatible with piping modeling systems such as PDS, PDMS, Microstation and graphics viewer such as Naviswork.
- Technical alignments and bid evaluation.
- Vendor Follow up.
- Technical documentation management.
- Rendering from 3D Model and reprographic (Rendering) of plant views.
- Walk-through virtual 3D.



Engineering services supply for:

Power:

ANSALDO s.p.a. – ACEA, RADES, ZAHRANI, A.S.M. Brescia, MEJILLONES, NEHUENCO, SONDEL.

ABB COMBUSTION s.p.a. – CELANO, AL HIDD, AMSA, API Falconara, ILVA Taranto, JESI.

NOOTER ERIKSEN srl – PRIOLO, VLORE, LIVADIA, MARCINELLE, OGK5 SRED.

S.T.F. s.p.a. – IRSCHING, GONYU, NUBARIA, JEBEL ALI, West BURTON.

ANSALDO CALDAIE s.p.a. - DU GOL, ANVERSA, BULLYLUMFORD, BARKA, CHIVASSO, JEBEL ALI, LA CASELLA, MONCALIERI, OSTIGLIA, PRIOLO, SPARANISE, TORREVALDALIGA SUD, VASILIKOS, YANBU, TORREVALDALIGA NORD, HAMM, HERDECKE, KNAPSACK.

F.C.L. PENSOTTI – PARMA INCINERATOR, TERNI INCINERATOR, SHAH GAS, HELPE, BRASKEM.

ENEL Innovation and Engineering Division – MOCHOVCE Gr. 3 (NUCLEAR).

Our staff has been employed in task force in Rome, for coordination and detailed engineering study of piping supports. In the development of this activity, our staff played also the role of consultant for the definition of pipe routing and secondary structures for piping supports.

Chemical and Petrochemical:

TECHINT s.p.a. – ATHOOS, ALCOA, CONDEA, GELA, SASOL, ILVA Taranto.

GESCO s.r.l. – Fomblin.

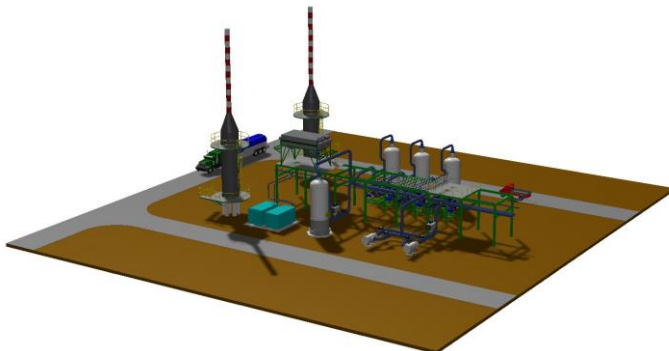
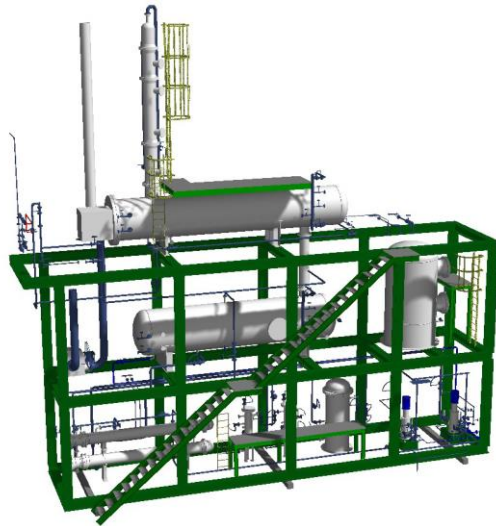
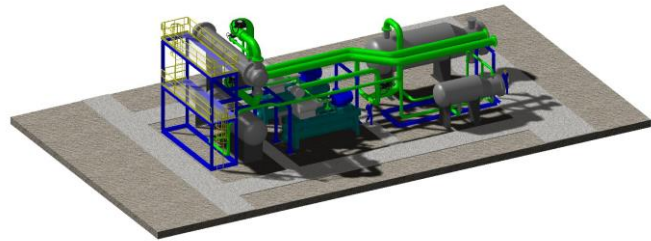
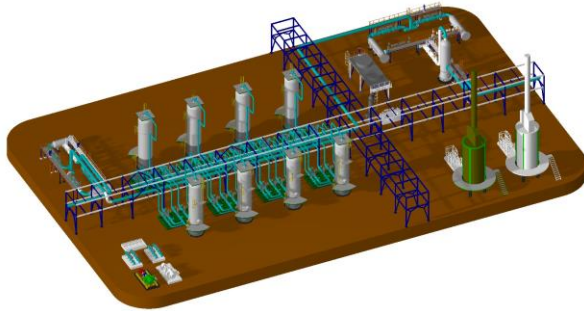
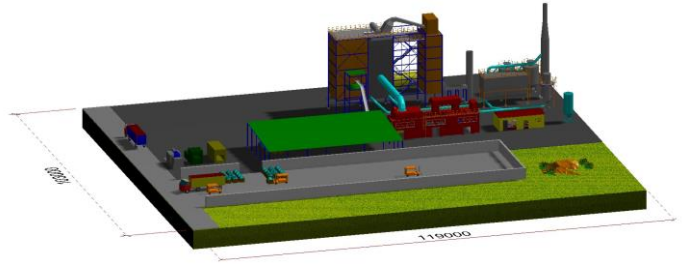
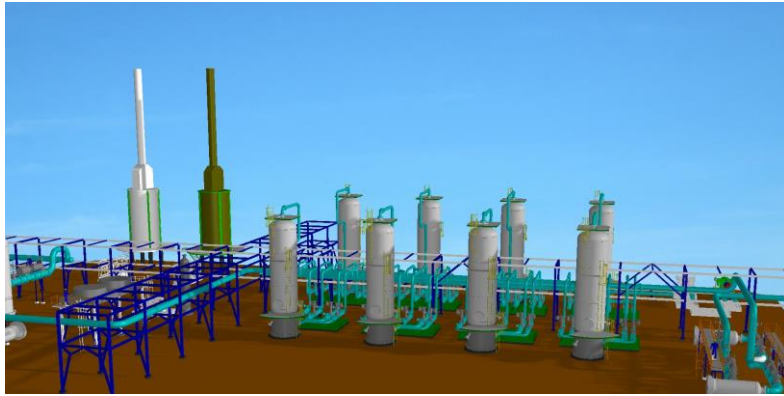
I.S.G. s.p.a. – ARAK REFINERY PROJECT, LPC PP PROJECT, NUAYYIM ASL CRUDE INCREMENT, DEHYDRATION ADSORBER VESSEL, ETHYLENE DRYING AND PURIFICATION PACKAGE, NAPHTHA HYDROTREATER REFORMER, ONS FIELD DEVELOPMENT, BASIS TEG UNIT, VERSALIS.

CDB ENGINEERING s.p.a. – RABIGH PROJECT, WEST QURNA, SAFCO UREA UNIT.

SIIRTEC NIGI s.p.a. – PROJECTS “UNDER SECRECY AGREEMENT”.

PROGER s.p.a. – PROJECTS “UNDER SECRECY AGREEMENT”.

Engineering for FEED/BASIC



Engineering for construction (EPC):

